



TM-20/40

Table Top Vacuum Tumbling Machine

Operation Manual

Version 6.9.1

1915 E. Acacia Street, Ontario, CA91761, U.S.A

TEL : 1-909-923-3888

FAX : 1-909-923-3588

<http://www.promarksvac.com>

S/N:

QC SIGNATURE:

INDEX

1.Installation	2
2.Maintenance	2
3.Functions and operations	2
4.Machine diagram	3
5.Electrical diagram	4
6.Explosive diagram & parts list	5-8

1. INSTALLATION.

Please check the electric power listed on the vacuum pump and install the vacuum pump correctly, ground line must on the floor.

2. MAINTENANCE.

A. To ensure vacuum pump works smoothly suggest change the vacuum oil every 500 working hours or every a half year.

B. Check water filter bottle everyday, as soon as the water over a half of the bottle please cleans it.

3. FUNCTIONS AND OPERATIONS.

Vacuum pump – turn the selection switch to vacuum pump position to start vacuum function.

Mixing motor – turn the selection switch to mixing motor to start tumbling the drum.

Total time – total time should be adjusted according to different products..

Inverter – adjust tumbling speed.

First, please turn the speed button to “0” , then adjust the speed gradually to avoid bringing large instant current to make the controler damaged.

First, stand up the drum body and feeding material then cover outer lid and pull out the vacuum, finally install the drum body on the machine.

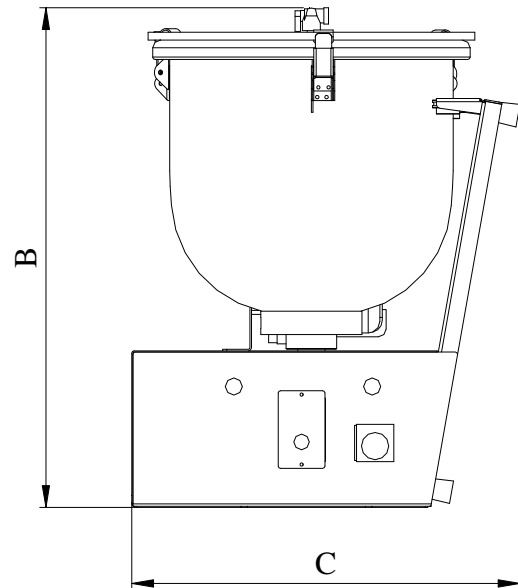
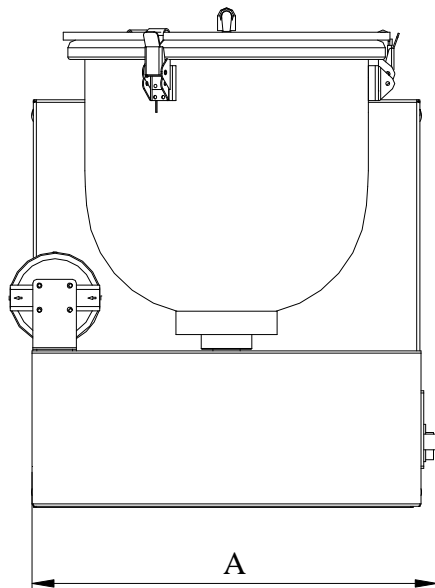
※ During operation, when the vacuum inside the drum is under the vacuum condition, and you turn the vacuum pump off to keep tumbling. Afterwards, you may find the vacuum pump is not vacuuming when you turn it on.

If this situation happens, please turn the vacuum pump off, close the valve on the lid, and remove the air tube which is connected to the drum.

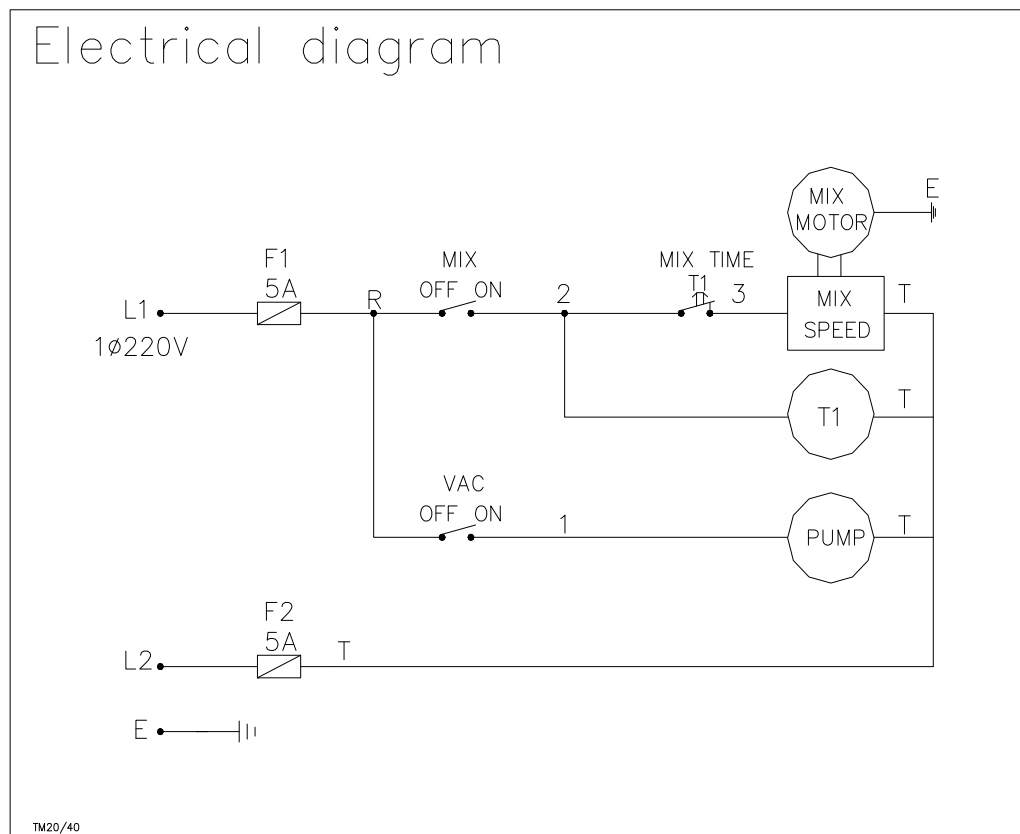
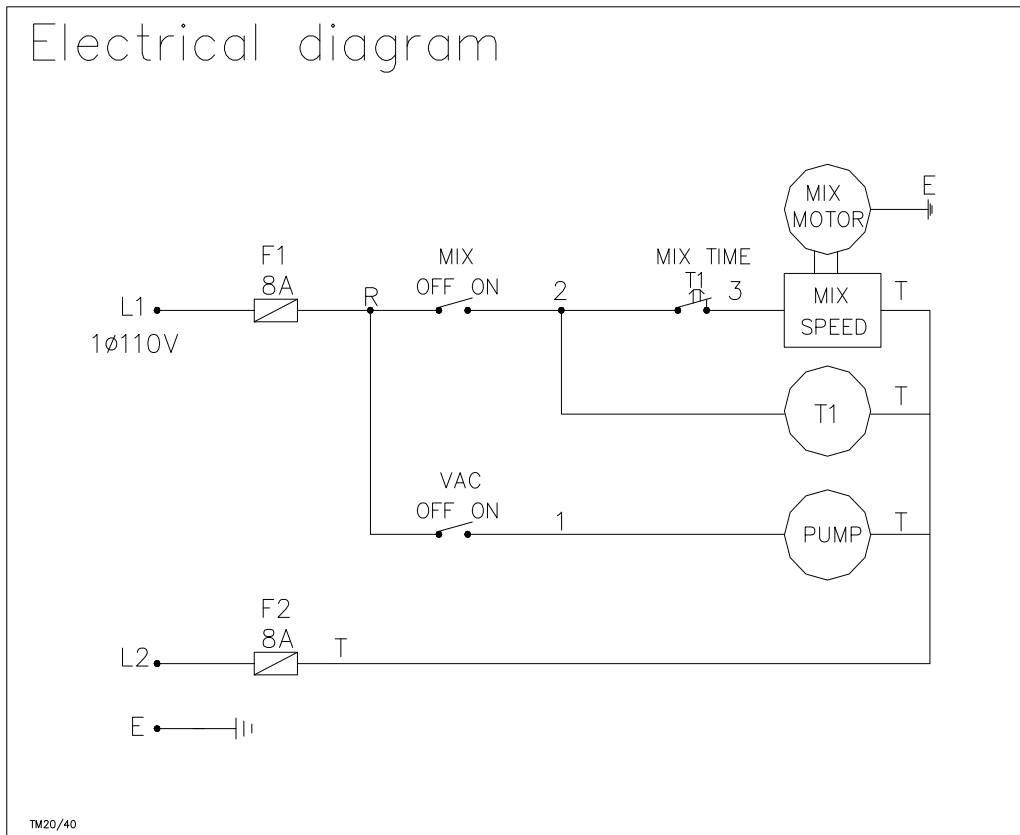
Then re-connect the air tube to the drum, open the valve on the lid, and turn the vacuum pump on then the machine can keep vacuuming again.

4. Machine Diagram

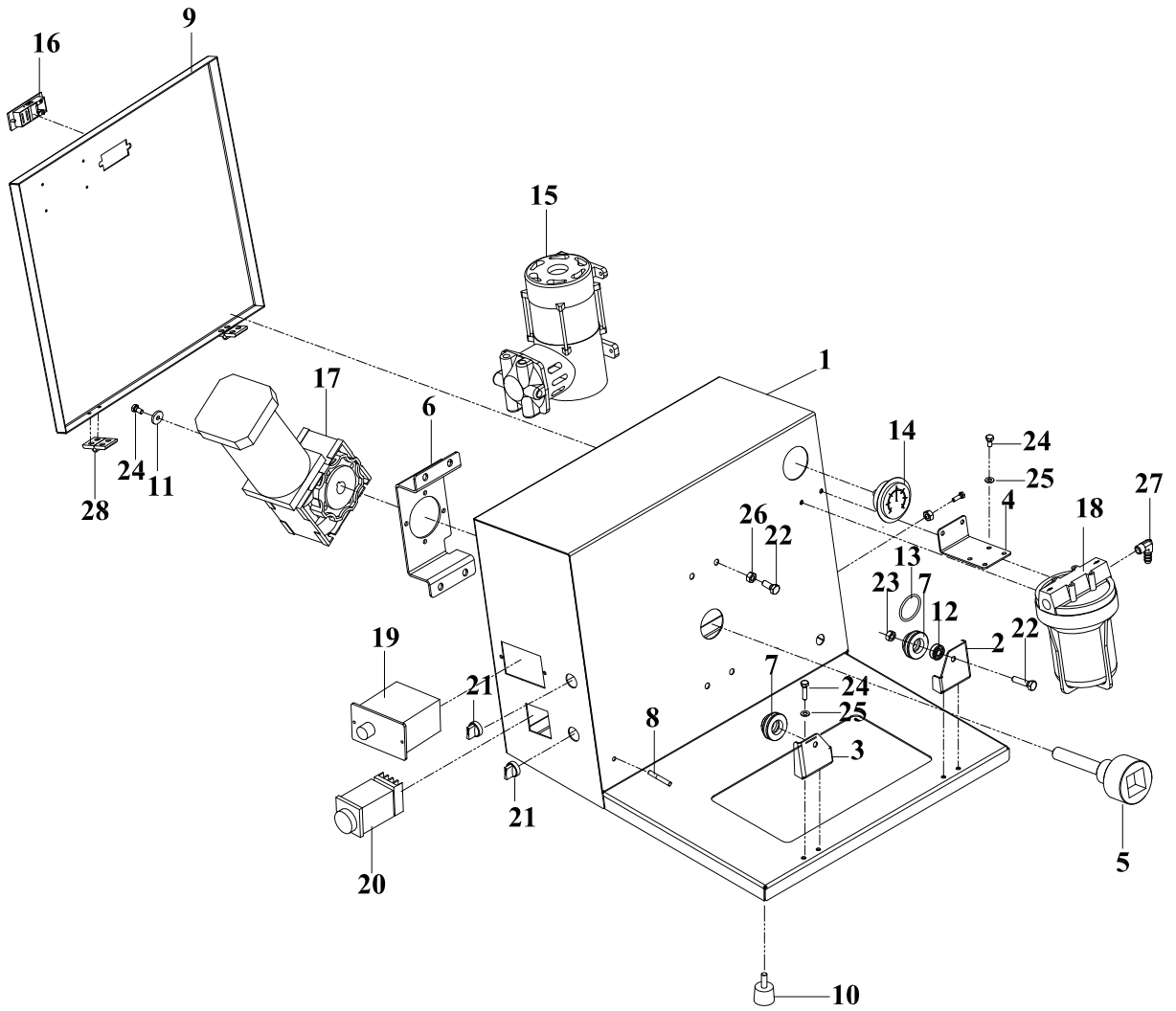
Model	A	B	C
TM-20	520	580	405
TM-40	520	645	500



5. ELECTRICAL DIAGRAM



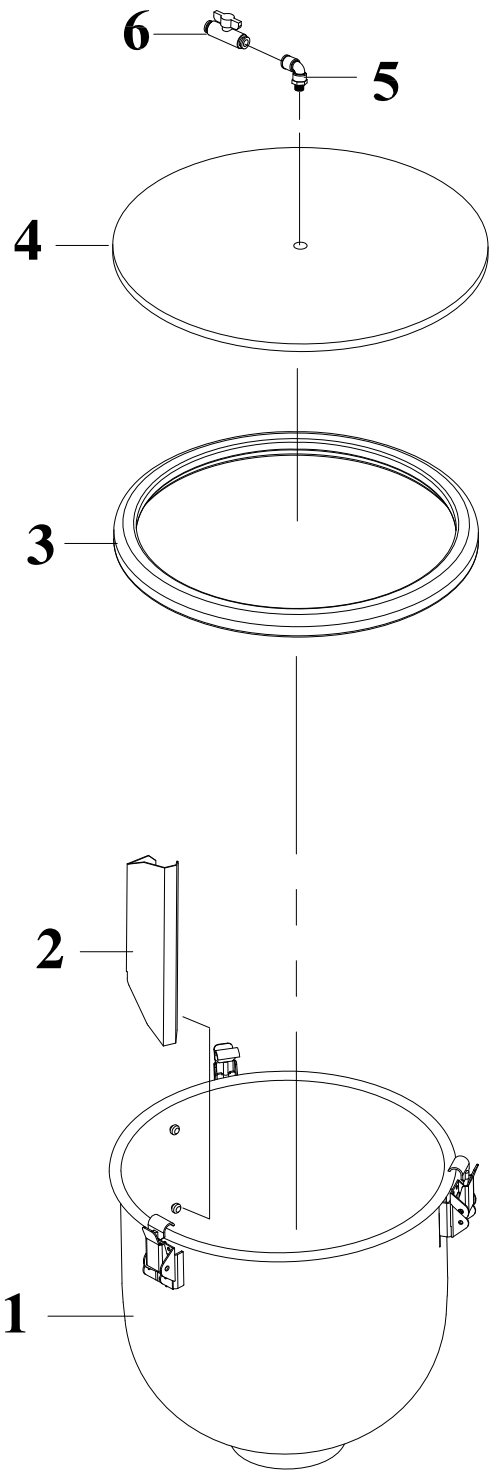
Body Diagram



TM04100000

NO.	PART NO.	DESCRIPTION	QTY	NOTES
1	TM02101001	FRAME,F/TM-20	1	Option
	TM04101001	FRAME,F/TM-40	1	
2	TM02102001	PLATE, SUPPORT, RIGHT, ROLLER, F/TM-20	1	Option
	TM04102001	PLATE, SUPPORT, RIGHT, ROLLER, F/TM-40	1	
3	TM02103001	PLATE, SUPPORT, LEFT, ROLLER, F/TM-20	1	Option
	TM04103001	PLATE, SUPPORT, LEFT, ROLLER, F/TM-40	1	
4	TM04104000	HOLDER,FILTER	1	
5	TM04106001	SHAFT,TRANSMISSION,REDUCER	1	
6	TM04114000	PLATE,HOLDING,REDUCER	1	
7	TM04116000	ROLLER	2	
8	TM04117000	SHAFT,HOLDING ,TUBE	1	
9	TM04119001	COVER,REAR	1	
10	VA04120001	FOOT, RUBBER	4	
11	TM04118000	WASHER,TRANSMISSION SHAFT	1	
12	27280191	BEARING, BALL 608ZZ	4	
13	27401644	O RING P35 (NBR)	2	
14	29135564	PRESSURE GAUGE 2"x760mmHg	1	
15	2961081	VACUUM PUMP UC-UN-40V-110V	1	Option
	2961082	VACUUM PUMP UC-UN-40V-220V	1	
16	2883134	LATCH, DOOR	1	
17	2814822	Motor MV-40090A 110V	1	Option
	2814821	Motor MV-40090A 220V	1	
	2814820	REDUCER, GEAR, WS-040-080-F	1	
18	2940011	SEPARATOR, WATER	1	
19	2801680	SPEED GOVERNOR W/GENERATOR 220V	1	Option
	2801681	SPEED GOVERNOR W/GENERATOR 110V	1	
20	2832020	TIMER RELAY,IDEC,GE1A-B30HA220	1	
21	2871220	SWITCH, SELECTOR, YW1S-2E10P	2	
22	2700420	SCREW, HEX HD M8x40 (S)	6	
23	2707203	NUT,ST. M8	4	
24	2700462	SCREW, HEX HD M6x30 (S)	5	
25	2705151	WASHER, FLAT M6 SUS	4	
26	2705152	WASHER, FLAT, M8 ST	4	
27	29091754	FITTING, COPPER, 90°, 1/4PTx1/4H	2	
28	27121921	HINGE, CL-226-3	2	

Drum Body Diagram



TM04200000

